

Pro Version



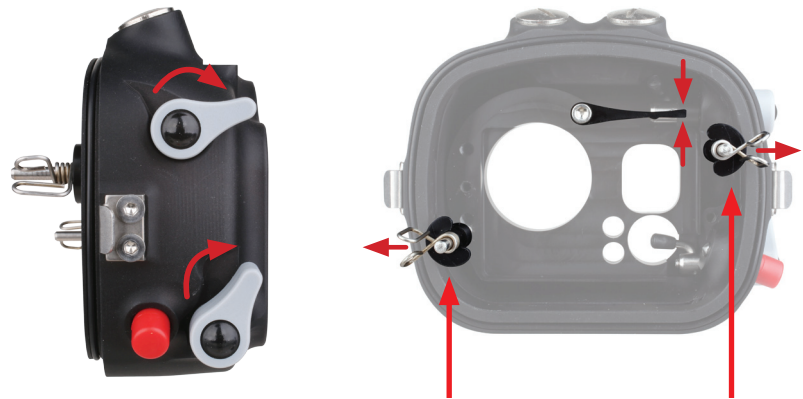
Depth rating
Max 100m

Maintenance

- rinse housing after each dive
- clean and grease main O-rings prior to each dive



Step 1: Set up the housing to install the GoPro camera



1
squeeze

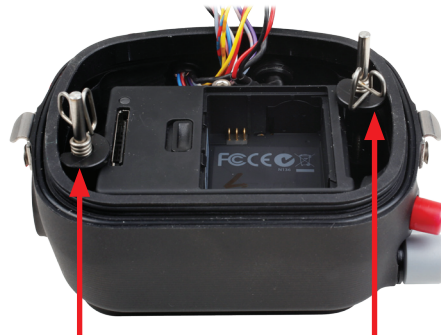


2
pull up



3
turn outwards

Step 2: Install the GoPro camera (remove battery and battery lid)



1
squeeze

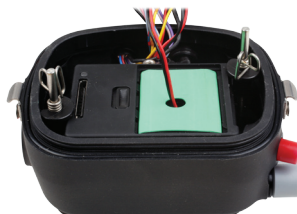


2
turn inwards



3
push down

Step 3: Install dummy battery and circuit board



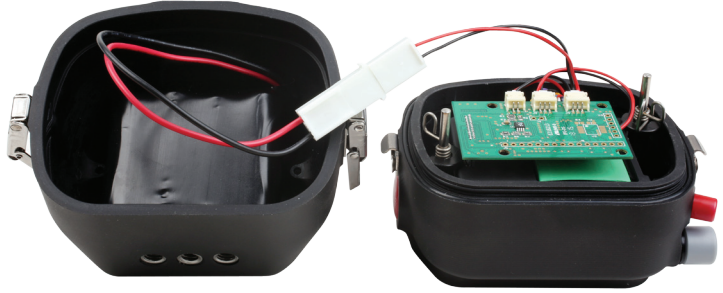
Camera housing

optional mount ball goes here

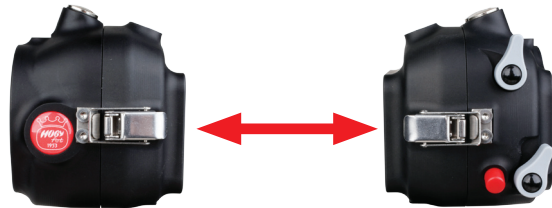


Hugyfot housing for GoPro Hero3

Step 4: Install battery in back lid and connect to circuit board

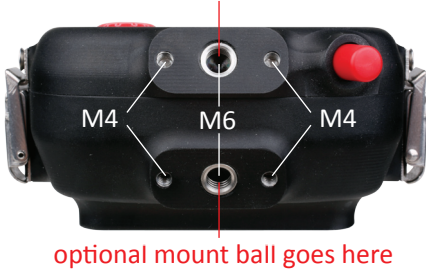


Step 5: Close latches on both sides together



LCD monitor housing

optional mount ball goes here



Hugyfot housing for LCD Screen

Step 1: Install LCD screen in housing



Step 2: Close latches on both sides together

